

# STATE OF ALASKA

## DEPARTMENT OF TRANSPORTATION AND PUBLIC FACILITIES

### PROPOSED HIGHWAY PROJECT

# JNU BACK LOOP-MENDENHALL LOOP RD. INTERSECTION

## SAFETY IMPROVEMENTS HSIP

### PROJECT No. SFHWY00240/0003242



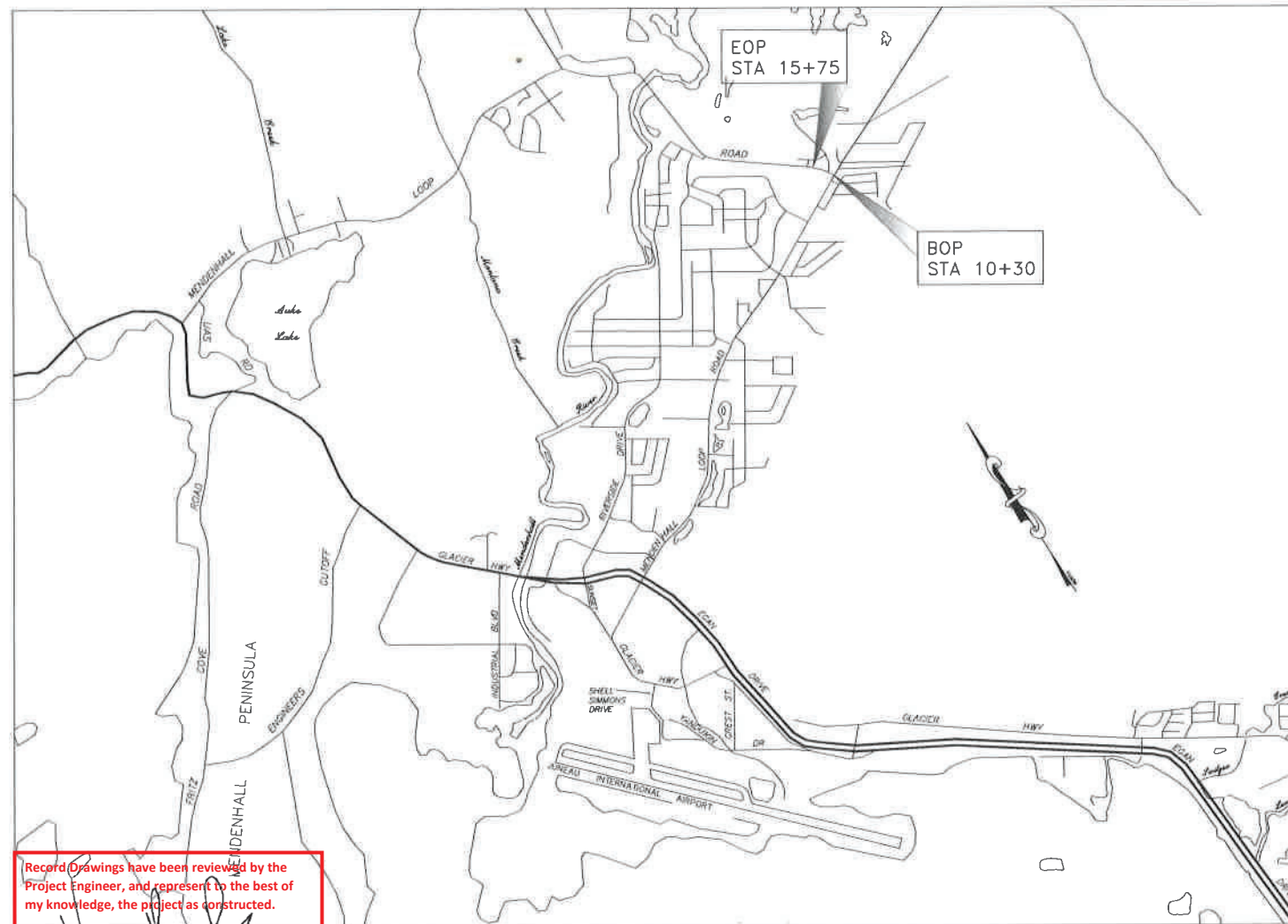
REVISIONS		STATE	PROJECT DESIGNATION	YEAR	SHEET NO.	TOTAL SHEETS
NO.	DATE	DESCRIPTION				
		ALASKA	SFHWY00240/0003242	2019	A1	2
					PLAN SET TOTAL	8
CDS ROUTE: 296401			MILEPOINT: 0.000 TO 0.109			
LATITUDE: 58°23'52"N			LONGITUDE: 134°33'37"W			

As-Advertised:

September 3, 2019

INDEX OF SHEETS	
SHEET NO.	DESCRIPTION
A1	TITLE SHEET
A2	LEGEND
C1	ESTIMATE OF QUANTITIES
D1	SIGN AND FLASHING BEACON SUMMARIES
F1	PLAN VIEW
F2	WARNING BEACON DETAILS
P1	EROSION AND SEDIMENT CONTROL PLAN
T1	TRAFFIC CONTROL PLANS

DESIGN DESIGNATIONS	
ADT (2018)	4508



VICINITY MAP  
N.T.S.

Record Drawings have been reviewed by the Project Engineer, and represent to the best of my knowledge, the project as constructed.

PE *[Signature]*

THE FOLLOWING STANDARD PLANS APPLY TO THIS PROJECT:

- S-05.01
- S-20.10
- S-31.01

USE THESE PLANS IN CONJUNCTION WITH THE STATE OF ALASKA STANDARD SPECIFICATIONS FOR HIGHWAY CONSTRUCTION, 2017 EDITION AND THE PROJECT SPECIAL PROVISIONS.

STATE OF ALASKA  
DEPARTMENT OF TRANSPORTATION & PUBLIC FACILITIES  
6860 GLACIER HIGHWAY, JUNEAU, AK 99801  
(907) 465-1763

APPROVED:

*[Signature]* 8/14/19  
L. PAT CARROLL, P.E.  
REGIONAL PRECONSTRUCTION ENGINEER DATE

CONCUR:

*[Signature]* 14 Aug 2019  
D. LANCE MEARIG, P.E.  
DIRECTOR, SOUTHCOAST REGION DATE

DRAWING LOCATION Q:\pfa\SFH00240\TR\_00240\_A1\_Tsmnet.dwg DATE TIME 7/12/2019 10:34

FILE: O:\maps\SFH\00240\TR\00240\_A2.dwg  
 DATE: 7/12/2019 10:29 LAYOUT: A3  
 DESIGNED: D.E.  
 CHECKED: D.E.  
 DRAFTED: D.S.

NO.	DATE	REVISION	STATE	PROJECT DESIGNATION	YEAR	SHEET NO.	TOTAL SHEETS
			ALASKA	SFH00240/0003242	2019	A2	8

	RECOVERED	SET
BLM MONUMENT		
GLO MONUMENT		
USC&GS MONUMENT		
PRIMARY MONUMENT		
CENTERLINE MONUMENT IN CASING		
PRIMARY R.O.W. MONUMENT		
BEARING OBJECT		
MISCELLANEOUS MONUMENT		
LINE OF SIGHT MONUMENT		
CONCRETE R.O.W. MONUMENT		
BENCHMARK		
REBAR AND CAP		
REBAR		
IRON PIPE		
PK NAIL		
SPIKE		
HUB AND TACK		
CONSTRUCTION CENTERLINE		
MICELLANEOUS CENTERLINE		
STATION EQUATION		
PROJECT RIGHT-OF-WAY LINE		
EXISTING RIGHT-OF-WAY LINE		
EXISTING PROPERTY LINE		
CONTROLLED ACCESS LINE		
EXISTING EASEMENT LINE		
PROPOSED EASEMENT LINE		
PROPOSED CUT SLOPE LIMIT		
PROPOSED FILL SLOPE LIMIT		
SECTION LINE		
1/4 SECTION LINE		
1/16 SECTION LINE		
TOWNSHIP & RANGE LINE		
MEANDER LINE		

	EXISTING	PROPOSED
SANITARY SEWER (FLOW DIRECTION →)		
FUEL LINE		
GAS LINE		
WATER LINE		
METER, VALVE, FIRE HYDRANT		
EXISTING STORM DRAIN (FLOW DIRECTION →)		
PROPOSED STORM DRAIN		
FIBER OPTIC LINE		
DIRECT BURIAL TELEPHONE CABLE		
DIRECT BURIAL ELECTRIC CABLE		
ELECTRIC LINE (OVERHEAD)		
POWER POLE LINE		
JOINT USE POWER & TELEPHONE		
TELEPHONE POLE LINE		
POLE ANCHOR		
STUB POLE (POWER OR TELEPHONE)		
TELEPHONE DUCT		
TELEPHONE PEDESTAL		
BURIED CABLE MARKER		
CATCH BASIN OR DROP INLET		
MANHOLE		
SANITARY SEWER CLEAN OUT		
AREA DRAIN		
PIPE CULVERT		
GEOGRID		
POROUS BACKFILL		
PRE-LEVELING		
ROADWAY REHABILITATION		
PAVEMENT PLANING AND OVERLAY		
APPROACH RESURFACING		
TOPSOIL AND SEEDING		
CLEARING		

	EXISTING	PROPOSED
ROADWAY/PAVEMENT EDGE		
FENCE		
CURB AND GUTTER		
DETECTABLE WARNINGS		
GUARDRAIL		
CULVERT PIPE		
SIGN		
MAILBOX		
TREE LINE		
FLOW CENTERLINE		
FLOW DIRECTION		
WETLANDS		
EXISTING BUILDINGS		
POST OR BOLLARD		
WELL OR MONITORING WELL		
SEPTIC PIPE		
FUEL TANK FILL PIPE/VENT		
TEST HOLE		
CONIFER TREE		
DECIDUOUS TREE		
THERMOSIPHON		
VEHICLE PLUG-IN		
DELINEATOR/GUIDE MARKER		
DITCH RECONDITIONING		

	EXISTING	PROPOSED
SIGN POST & NUMBER		
PRIVATE SIGN		
4" WHITE SOLID STRIPE		
4" YELLOW SOLID STRIPE		
4" YELLOW SKIP STRIPE		
2' CROSSWALK OR STOPBAR		

- H = HOUSE
- G = GARAGE
- M = MERCHANT/STORE
- B = BARN
- S = SHED
- P = PRIVY
- SS = SERVICE STATION
- W = WAREHOUSE

Record Drawings have been reviewed by the Project Engineer, and represent to the best of my knowledge the project as constructed.  
 PE   
 T. 2 N.  
 T. 1 N.  
 T. 1 E.  
 T. 2 E.  
 M1 M2 M3

8-13-19

STATE OF ALASKA DEPARTMENT OF TRANSPORTATION AND PUBLIC FACILITIES  
 6860 GLACIER HIGHWAY, JUNEAU, AK 99811  
 (907) 465-1763

**JNU BACK LOOP-MENDENHALL LOOP RD. INTERSECTION SAFETY IMPROVEMENTS HSIP**

LEGEND



FILE C:\muu\SFH\00240\TR\00240\_D1.dwg DATE 7/12/2019 10:25 LAYOUT MODEL DESIGNED D.E. CHECKED D.E. DRAFTED D.S.

NO.	DATE	REVISION	STATE	PROJECT DESIGNATION	YEAR	SHEET NO.	TOTAL SHEETS
			ALASKA	SFH\00240\0003242	2019	D1	8

615(1) STANDARD SIGN SUMMARY										
SIGN NUMBER	STATION	OFFSET	SIGN FACES	DESCRIPTION	ASDS CODE	WIDTH (IN)	HEIGHT (IN)	AREA (SF)	POST	REMARKS
1	10+30	LT	W	STOP	R1-1	36	36	9.00	SEE NOTE 1	
2	10+30	LT	E-W	MENDENHALL LOOP RD	D3-1	54	8	6.00	SEE NOTE 1	USE 4"/3" UC/LC C-FONT. TWO SIGNS MOUNTED BACK TO BACK ON OPPOSITE SIDES OF THE POST.
3	15+75	LT	W	STOP AHEAD (SYMBOL)	W3-1	30	30	6.25	SEE NOTE 1	
4	15+75	LT	W	STOP AHEAD	CUSTOM	24	18	3.00	SEE NOTE 1	USE 5" UC B-FONT. BLACK LEGEND ON YELLOW BACKGROUND

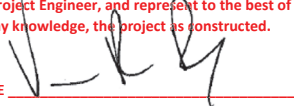
**NOTES:**

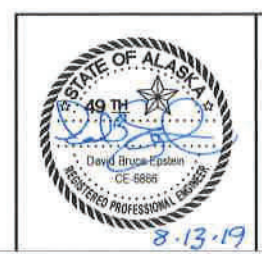
- SIGNS SHALL BE MOUNTED ON VENDOR-SUPPLIED POSTS.
- ~~MOUNT SIGN NO. 3 BELOW SIGN NO. 2.~~ **MOUNT SIGN NO. 1 BELOW SIGN NO. 2**
- REMOVE AND DISPOSE OF EXISTING STOP, STOP AHEAD (SYMBOL), AND CUSTOM STOP AHEAD SIGNS.
- STATIONING IS BASED ON LOCATION OF EXISTING SIGNS.

660(2) FLASHING BEACON SUMMARY	
STA. AND OFFSET	FLASHING BEACON TYPE
<del>10+30</del>	RED LED, 12", SOLAR-POWERED
<del>15+75</del>	YELLOW LED, 12", SOLAR-POWERED

10+46 26'LT  
15+95 30'LT

Record Drawings have been reviewed by the Project Engineer, and represent to the best of my knowledge, the project as constructed.

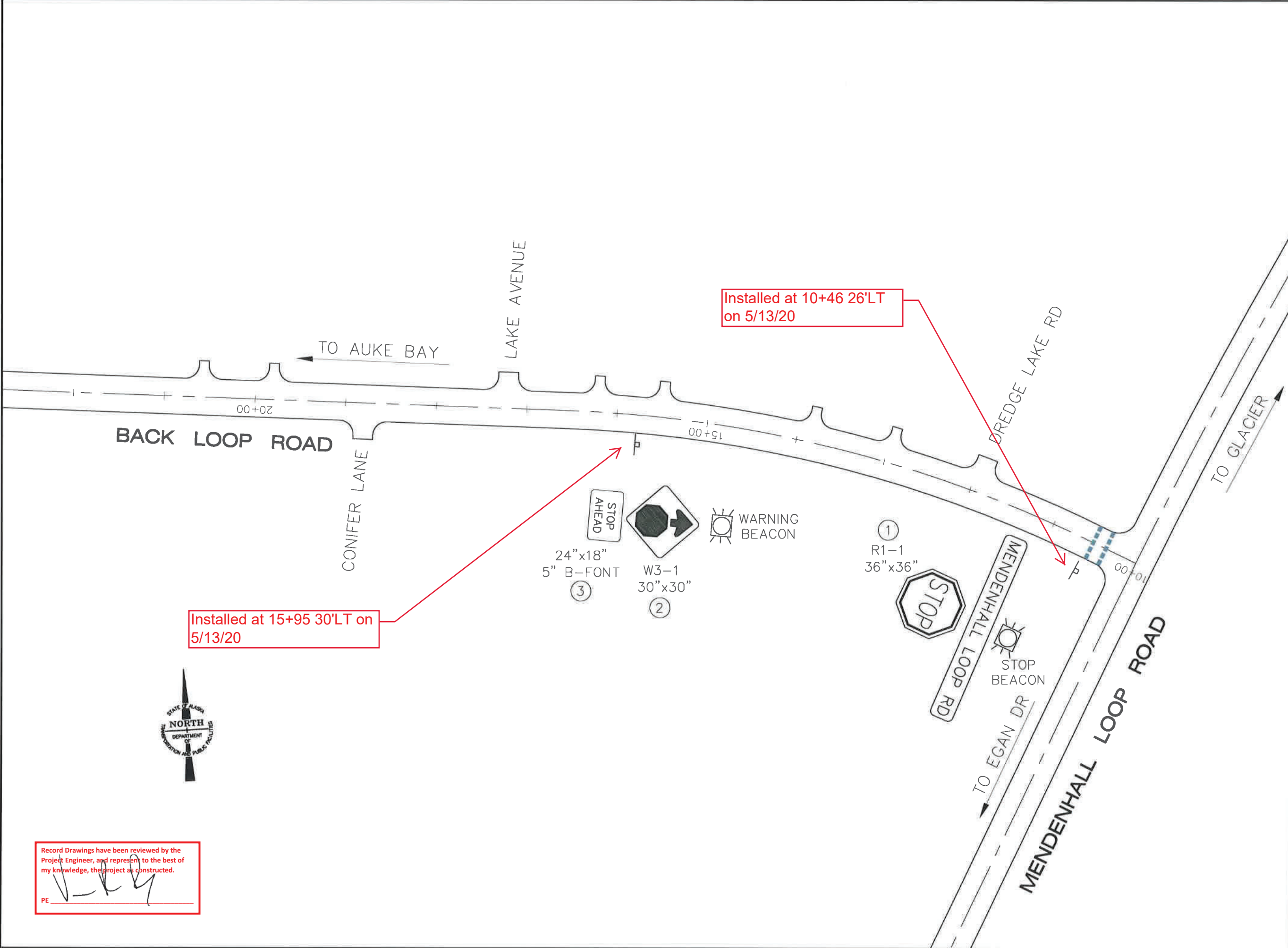
PE 



STATE OF ALASKA DEPARTMENT OF TRANSPORTATION AND PUBLIC FACILITIES  
6860 GLACIER HIGHWAY, JUNEAU, AK 99811  
(907) 465-1763

**JNU BACK LOOP-MENDENHALL LOOP RD. INTERSECTION SAFETY IMPROVEMENTS HSIP SIGN AND FLASHING BEACON SUMMARIES**

ADDENDUM NUMBER		
ATTACHMENT NUMBER		
RECORD OF REVISIONS		
No.	DATE	DESCRIPTION



Record Drawings have been reviewed by the Project Engineer, and represent to the best of my knowledge, the project as constructed.

PE *[Signature]*

JNU BACK LOOP-  
 MENDENHALL LOOP RD.  
 INTERSECTION  
 SAFETY IMPROVEMENTS HSIP  
 PLAN VIEW

DESIGNED BY: D. EPSTEIN



CHECKED BY: D. EPSTEIN  
 DRAWN BY: D. STEVENS

STATE OF ALASKA  
 DEPARTMENT OF TRANSPORTATION  
 & PUBLIC FACILITIES  
 SOUTHCOST REGION

JNU BACK LOOP-  
 MENDENHALL LOOP RD.  
 INTERSECTION SAFETY  
 IMPROVEMENTS HSIP

PLAN VIEW

PROJECT DESIGNATION NUMBER  
 SFHWY00240/0003(242)

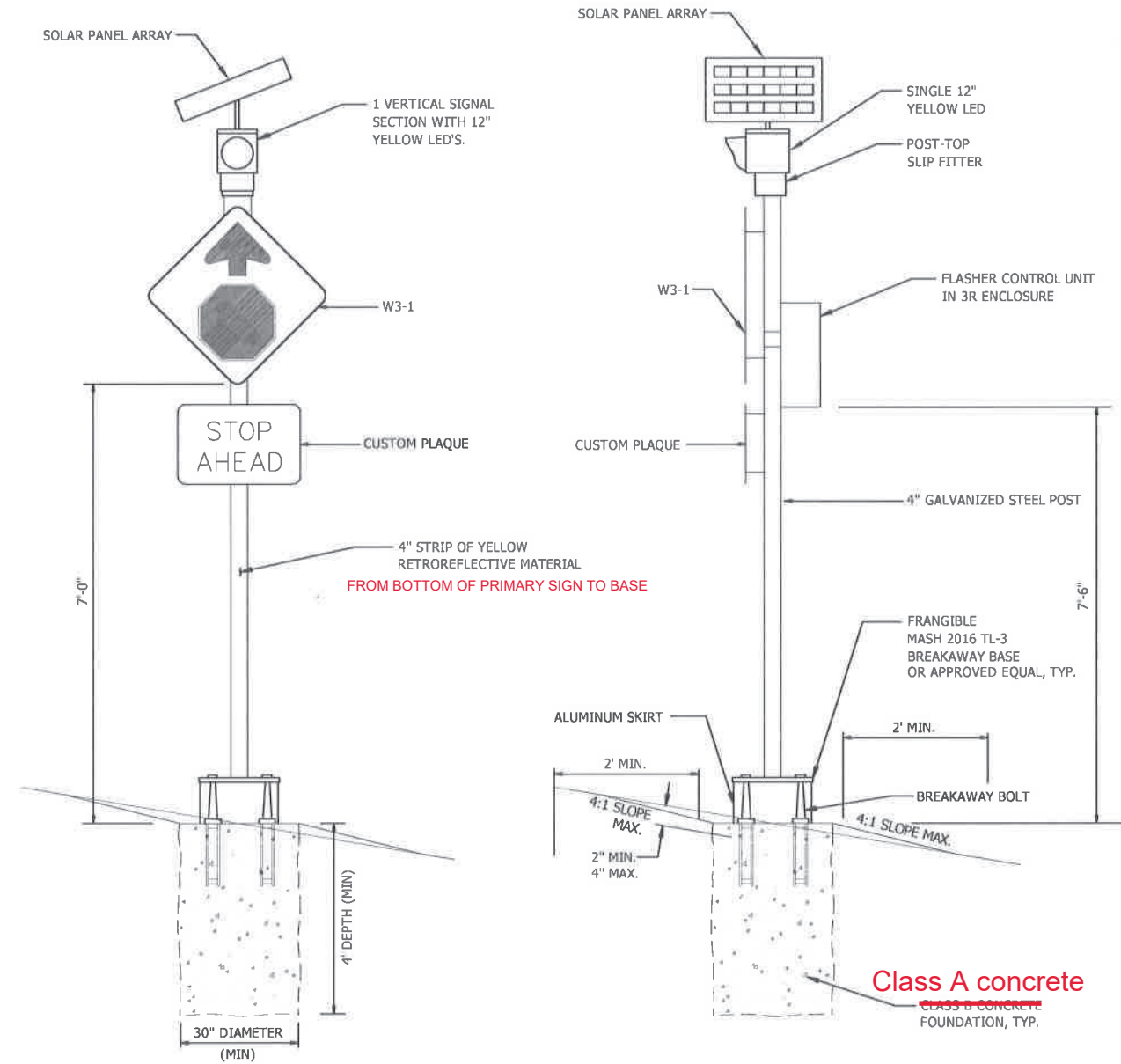
STATE	YEAR
ALASKA	2019
SHEET NUMBER	TOTAL SHEETS
F1	8

ADDENDUM NUMBER		
ATTACHMENT NUMBER		
RECORD OF REVISIONS		
No.	DATE	DESCRIPTION

JNU BACK LOOP-  
 MENDENHALL LOOP RD.  
 INTERSECTION  
 SAFETY IMPROVEMENTS HSIP  
 WARNING BEACON DETAILS

NOTES:

1. THERE SHALL BE TWO FLASHING BEACONS INSTALLED IN THIS PROJECT: A YELLOW LED WARNING BEACON AND A RED STOP BEACON.
2. EACH BEACON SHALL HAVE A SINGLE 12-INCH SIGNAL HEAD.
3. THE SIGNPOSTS AND BREAKAWAY BASES SHALL CONFORM TO SECTION 740-2.02 OF THE 2017 STANDARD SPECIFICATIONS FOR HIGHWAY CONSTRUCTION.
4. EACH BEACON SHALL HAVE ITS OWN CONTROL UNIT, AS PROVIDED BY THE MANUFACTURER. NO JUNCTION BOXES ARE REQUIRED.
5. THE BEACON DEPICTED IS THE YELLOW FLASHING UNIT TO BE CONSTRUCTED AT STA. 15+75. THE STOP BEACON COLOCATED WITH THE STOP SIGN AT APPROXIMATE STATION 10+30 IS IDENTICAL EXCEPT IT SHALL HAVE A RED LED SIGNAL HEAD.
6. AFFIX 4-INCH STRIPS OF RETROREFLECTIVE MATERIAL TO EACH SIGNPOST ~~FOR THE FULL LENGTH OF THE SIGNPOSTS~~. STRIP COLOR SHALL BE YELLOW FOR THE WARNING BEACON SIGN AND RED FOR THE STOP BEACON SIGN.
7. THE BATTERY FOR EACH BEACON SHALL BE A 12-VOLT, MINIMUM 100 AMP-HR SYSTEM CAPABLE OF POWERING THE BEACON FOR A MINIMUM OF 15 DAYS OF CONTINUOUS OPERATION.
8. THE SOLAR PANEL SHALL BE RATED AT A MINIMUM 80 WATTS.
9. THE BEACONS SHALL FLASH AT A RATE OF NOT LESS THAN 50 OR MORE THAN 60 TIMES PER MINUTE. THE ILLUMINATED PERIOD OF EACH FLASH SHALL BE A MINIMUM OF 1/4 AND A MAXIMUM OF 2/3 OF THE TOTAL CYCLE.
10. INSTALL BEACONS IN ACCORDANCE WITH THE MANUFACTURER'S INSTRUCTIONS.
11. THE BOTTOM OF THE SIGNAL HOUSING OF THE STOP BEACON SHALL BE NOT LESS THAN 12 INCHES OR MORE THAN 24 INCHES ABOVE THE TOP OF THE STOP SIGN.



WARNING BEACON DETAILS

Record Drawings have been reviewed by the Project Engineer, and represent to the best of my knowledge, the project as constructed.

PE *[Signature]*

DESIGNED BY: D. EPSTEIN



CHECKED BY: D. EPSTEIN

DRAWN BY: D. STEVENS

STATE OF ALASKA  
 DEPARTMENT OF TRANSPORTATION  
 & PUBLIC FACILITIES  
 SOUTHCOST REGION

JNU BACK LOOP-  
 MENDENHALL LOOP RD.  
 INTERSECTION SAFETY  
 IMPROVEMENTS HSIP

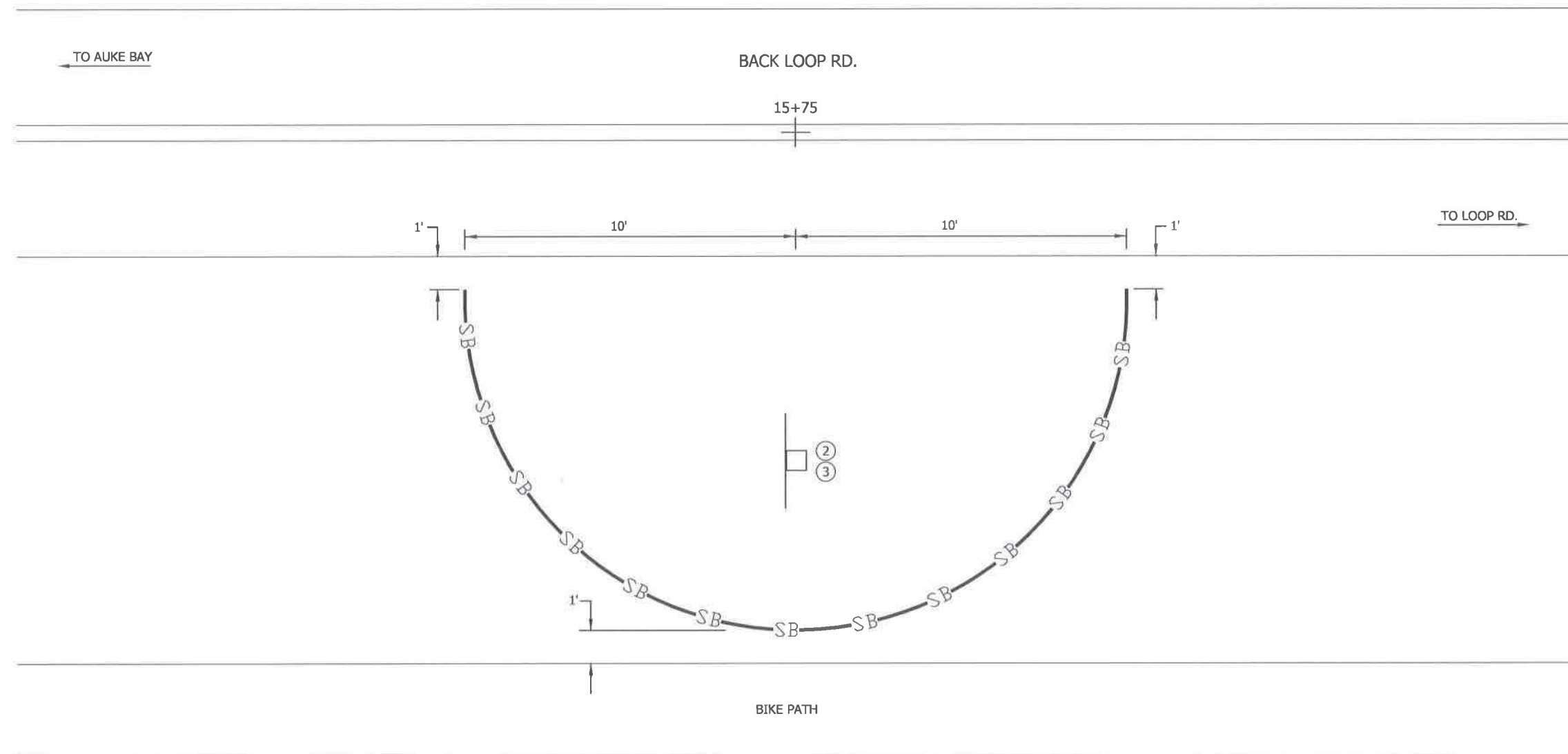
WARNING  
 BEACON DETAILS

PROJECT DESIGNATION NUMBER

SFHWHY00240/0003(242)

STATE	YEAR
ALASKA	2019
SHEET NUMBER	TOTAL SHEETS
F2	8

ADDENDUM NUMBER		
ATTACHMENT NUMBER		
RECORD OF REVISIONS		
No.	DATE	DESCRIPTION



JNU BACK LOOP-  
 MENDENHALL LOOP RD.  
 INTERSECTION  
 SAFETY IMPROVEMENTS HSIP  
 EROSION AND SEDIMENT  
 CONTROL PLAN

DESIGNED BY: D. EPSTEIN

ESCP NOT SEALED IN ACCORDANCE WITH ALASKA HIGHWAY PRECONSTRUCTION MANUAL SECTION 1120.7.3

CHECKED BY: D. EPSTEIN  
 DRAWN BY: D. STEVENS

STATE OF ALASKA  
 DEPARTMENT OF TRANSPORTATION & PUBLIC FACILITIES  
 SOUTHCOST REGION

JNU BACK LOOP-  
 MENDENHALL LOOP RD.  
 INTERSECTION SAFETY  
 IMPROVEMENTS HSIP  
 EROSION AND  
 SEDIMENT CONTROL  
 PLAN

PROJECT DESIGNATION NUMBER	
SFHWY00240/0003(242)	
STATE	YEAR
ALASKA	2019
SHEET NUMBER	TOTAL SHEETS
P1	8

**NOTES:**

1. SEDIMENT BARRIER SHALL BE CONSTRUCTED TO ENVELOP CONSTRUCTION ACTIVITIES. PROVIDE MINIMUM 10 FEET CLEARANCE FROM NEAREST GROUND DISTURBANCE.
2. PROVIDE TEMPORARY OR PERMANENT STABILIZATION FOR ALL DISTURBED SOILS AND ERODIBLE STOCKPILES AT THE END OF EACH DAILY SHIFT OR PROVIDE EROSION AND SEDIMENT CONTROL BMP'S.
3. FOLLOW THE PROVISIONS OF ALASKA DOT&PF BMP GUIDE FOR EROSION AND SEDIMENT CONTROL TO CONSTRUCT AND MAINTAIN SEDIMENT BARRIER.
4. INSTALL EROSION AND SEDIMENT CONTROL DEVICES BEFORE BEGINNING EARTH DISTURBING ACTIVITIES. MAINTAIN AND MONITOR DAILY.
5. PREVENT OFF-SITE TRACKING OF SEDIMENT BY WORKERS, VEHICLES AND/OR EQUIPMENT. REGULARLY SWEEP PAVEMENT IN WORK AREAS AND EMPLOY GOOD HOUSEKEEPING PRACTICES.
6. COMPLY WITH ALL NECESSARY PERMIT CONDITIONS AND ENVIRONMENTAL COMMITMENTS AS OUTLINED IN THE CONSTRUCTION DOCUMENTS.
7. THERE SHALL BE NO SEDIMENT BARRIER FOR SIGN 1.

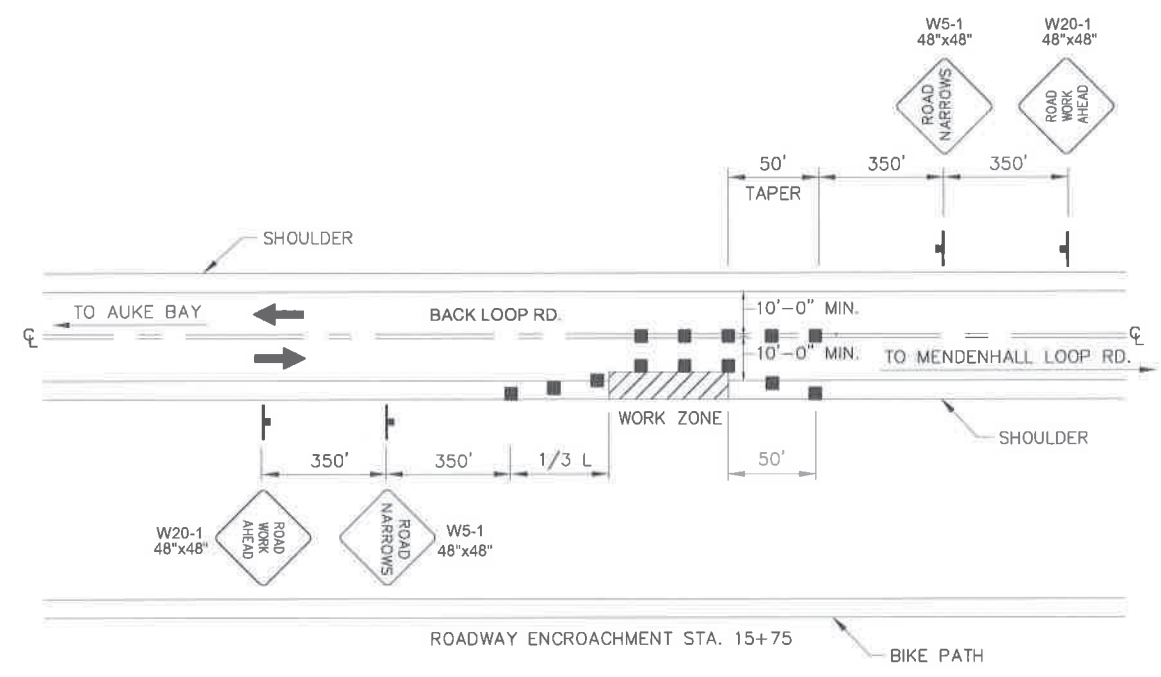
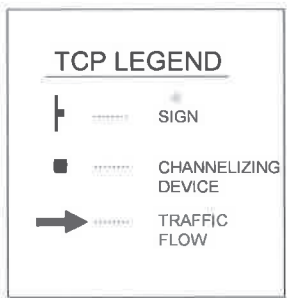
Record Drawings have been reviewed by the Project Engineer, and represent to the best of my knowledge, the project as constructed.  
 PE

FILE | Q:\Jnu\SFHWY00240\TR\00240\_T1.dwg | DATE 7/12/2019 9:59 | LAYOUT T1 | DESIGNED D.E. | CHECKED D.E. | DRAFTED D.S.

NO.	DATE	REVISION	STATE	PROJECT DESIGNATION	YEAR	SHEET NO.	TOTAL SHEETS
			ALASKA	SFHWHY00240/0003242	2019	T1	8

### TRAFFIC CONTROL NOTES

- IT IS THE INTENT OF THIS TRAFFIC CONTROL PLAN (TCP) TO ILLUSTRATE SOME BUT NOT ALL OF THE TRAFFIC CONTROL CONFIGURATIONS THAT WILL BE REQUIRED BY THIS PROJECT. TRAFFIC CONTROL PLANS FOR CONFIGURATIONS NOT COVERED BY THIS TCP SHALL BE DEVELOPED BY THE CONTRACTOR. ALL TCP'S MUST BE SUBMITTED FOR APPROVAL BY THE ENGINEER PRIOR TO USE.
- TWO LANES SHALL BE MAINTAINED AT ALL TIMES IN NON-WORK AREAS AND DURING NON-WORKING HOURS.
- TEMPORARY DRIVING LANES SHALL BE A MINIMUM WIDTH OF 10'-0" WIDE.
- CHANNELIZATION DEVICES USED AT NIGHT SHALL BE LIT IN ACCORDANCE WITH THE ALASKA TRAFFIC MANUAL.
- CONTRACTOR SHALL AVOID BLOCKING BIKE PATH AND BUS STOP.



### ROADWAY ENCROACHMENT

- NOTES:**
- $L = WS = 8 \times 45 = 360'$
  - DEVICE SPACING ALONG TAPER = 45' MAX.
  - DEVICE SPACING ALONG TANGENT = 90' MAX.

Record Drawings have been reviewed by the Project Engineer, and represent to the best of my knowledge, the project as constructed.

PE *[Signature]*

TCP NOT SEALED IN ACCORDANCE WITH ALASKA HIGHWAY PRECONSTRUCTION MANUAL SECTION 1400.3.5

STATE OF ALASKA DEPARTMENT OF TRANSPORTATION AND PUBLIC FACILITIES  
 6860 GLACIER HIGHWAY, JUNEAU, AK 99811  
 (907) 465-1763

**JNU BACK LOOP-MENDENHALL LOOP RD. INTERSECTION SAFETY IMPROVEMENTS HSIP**

TRAFFIC CONTROL PLAN